

NWR Drumline Grooves

Snare

Northwest Rankin Band 2011

NWR Drumline

Pearl

R R R R R R R R R L R R L L R L R R L L R L L R L R L

f

R L R L R L R L R L R L R L R L R L

NWR Drumline Grooves

A musical staff in 2/4 time with a key signature of one flat. It contains two measures of eighth-note patterns. The first measure has four eighth notes with accents (>). The second measure has four eighth notes with accents (>).

A musical staff in 2/4 time with a key signature of one flat. It contains four measures of eighth-note patterns. The first three measures have eighth-note patterns, and the fourth measure has a quarter note followed by a quarter rest.

R L R L R L R L R L R L R L

Donk

A musical staff in 2/4 time with a key signature of one flat. It contains two measures of eighth-note patterns. The first measure has eighth notes with accents (>). The second measure has eighth notes with accents (>).

A musical staff in 2/4 time with a key signature of one flat. It contains two measures of eighth-note patterns. The first measure has eighth notes with accents (>). The second measure has eighth notes with accents (>).

A musical staff in 2/4 time with a key signature of one flat. It contains two measures of eighth-note patterns. The first measure has eighth notes with accents (>). The second measure has eighth notes with accents (>).

A musical staff in 2/4 time with a key signature of one flat. It contains two measures of eighth-note patterns. The first measure has eighth notes with accents (>). The second measure has eighth notes with accents (>).

Bob Saget

A musical staff in 2/4 time with a key signature of one flat. It contains two measures of eighth-note patterns. The first measure has eighth notes with accents (>) and a ^ above the second eighth note. The second measure has eighth notes with accents (>) and a ^ above the second eighth note.

R L R R L L R L R L

R L R R L L R L R L R L R L R L

A musical staff in 2/4 time with a key signature of one flat. It contains two measures of eighth-note patterns. The first measure has eighth notes with accents (>) and a ^ above the second eighth note. The second measure has eighth notes with accents (>) and a ^ above the second eighth note.

R R L R L R L R L R L R L L R L R L R L R L R R R L L L R R R L L L

A musical staff in 2/4 time with a key signature of one flat. It contains two measures of eighth-note patterns. The first measure has eighth notes with accents (>) and a ^ above the second eighth note. The second measure has eighth notes with accents (>) and a ^ above the second eighth note.

R R L R L R L R L R L R L R L R L R L R L

A musical staff in 2/4 time with a key signature of one flat. It contains two measures of eighth-note patterns. The first measure has eighth notes with accents (>) and a ^ above the second eighth note. The second measure has eighth notes with accents (>) and a ^ above the second eighth note.

R L R L R L R L R L R L R L R L R L R L R L R L R L R L R L

NWR Drumline Grooves

R L R R L R L L L R L L R L R L R L R R L L L R L R L

R L R R L L R L R L R L R L R L R L R R L R L R L R L R L L R L

R L R L R L R L R R R L L L R R R L L L R

Gut Rocket

L L R L L R R L R L L R L L R L L R R L R L R L R

L L R L L R R L R L L R L L R R L R L R L R L

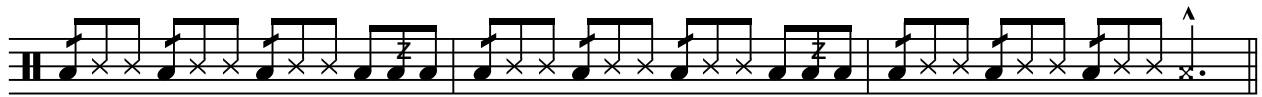
War Hammer

R

NWR Drumline Grooves



R L L R L L R L L R L R



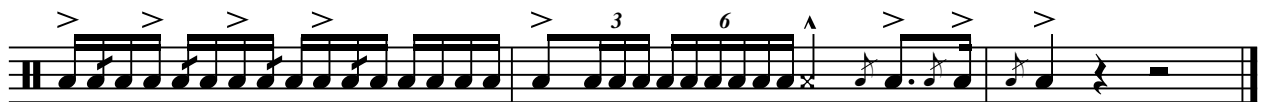
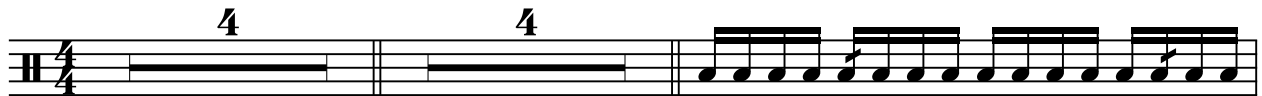
R L L R L L R L L R L R R L L R L L R L L R L L R L L R



R



Chupacabra



R

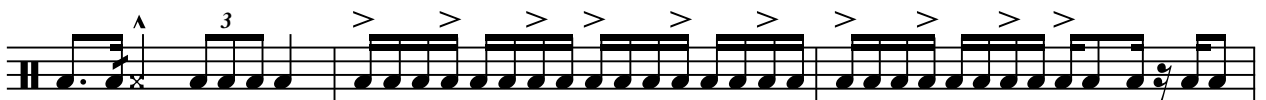
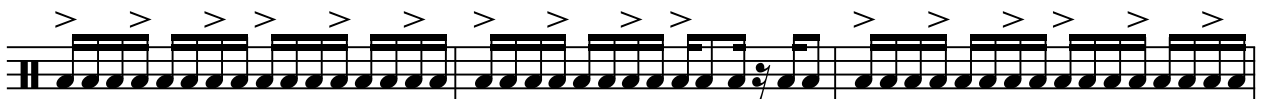
Spyder



NWR Drumline Grooves



Jamaican Jam



NWR Drumline Grooves

Butt Dance

Musical notation for the Butt Dance groove, consisting of four staves. The first staff features a series of eighth-note patterns with accents (>) and a sequence of sixteenth notes marked with 'x'. The second and third staves continue these patterns with various rests and accents. The fourth staff concludes the groove with a final eighth-note pattern and a quarter rest.

Ten Four

Musical notation for the Ten Four groove, consisting of two staves. The first staff shows eighth-note patterns with accents (>) and a sequence of sixteenth notes marked with 'x'. The second staff continues the groove with eighth-note patterns and includes four triplet markings (3) over groups of three notes.

Half Time

rit.

Musical notation for the Half Time groove, consisting of two staves. The first staff features eighth-note patterns with accents (>), a sequence of sixteenth notes marked with 'x', and a sequence of eighth notes marked with '^'. The second staff continues the groove with eighth-note patterns and a final quarter rest.

Tenors

NWR Drumline Grooves

Northwest Rankin Band 2011

Pearl

NWR Drumline

The first staff of music shows four measures with time signatures 4/4, 3/8, 3/4, and 4/4. The first three measures contain rests, while the fourth measure begins a rhythmic pattern of eighth notes.

The second staff begins with a forte (*f*) dynamic marking. It contains a continuous rhythmic pattern of eighth notes across the entire staff.

The third staff continues the rhythmic pattern of eighth notes from the previous staff.

The fourth staff features a rhythmic pattern of eighth notes with accents (>) placed above every other note.

The fifth staff continues the rhythmic pattern of eighth notes.

The sixth staff continues the rhythmic pattern of eighth notes.

The seventh staff continues the rhythmic pattern of eighth notes.

The eighth staff includes a measure with a fermata over a note, followed by a final measure with accents (>) over the notes.

The ninth staff features a rhythmic pattern of eighth notes with accents (>) placed above every other note.

The tenth staff concludes the piece with a rhythmic pattern of eighth notes and a final measure containing a fermata.

NWR Drumline Grooves

Donk

(shots)

Musical notation for the 'Donk' groove. It consists of two staves. The top staff is a single line with a treble clef, showing a sequence of notes with accents and triplets. The bottom staff is a double line with a bass clef, showing a sequence of eighth notes.

Bob Saget

Musical notation for the 'Bob Saget' groove. It consists of two staves. The top staff is a single line with a treble clef, showing a sequence of notes with accents and triplets. The bottom staff is a double line with a bass clef, showing a sequence of notes with accents and triplets. Below the notation are two lines of drum notation: L L R R L L R R R L L R L R L R R R L R L R L R L R L R L L R and R L R L R L R L R R R L L L R R R L L L R.

Gut Rocket

Musical notation for the 'Gut Rocket' groove. It consists of two staves. The top staff is a single line with a treble clef, showing a sequence of notes with accents and triplets. The bottom staff is a double line with a bass clef, showing a sequence of eighth notes.

R L R L R L R R

R L R L R L R L

War Hammer

(rims)

R R L R R L R R L L

R R L R R L R R L L R R L R R L R R L L R R L R R L R R L L

Chupacabra

Musical score for 'Chupacabra' in 4/4 time. The score consists of four staves. The first staff begins with a measure of rest followed by a measure containing the number '4'. The music features a rhythmic pattern of eighth notes with accents (>) and a final note with an accent (^). The second and third staves continue this pattern with various rests and accents. The fourth staff includes a triplet of eighth notes (marked '3') and a sextuplet of eighth notes (marked '6') before concluding with a final note and a double bar line.

Spyder

Musical score for 'Spyder' in 4/4 time. The score consists of six staves. The first staff has three measures of rest, each with a measure number '2', '4', and '4' above it. The music begins on the fourth staff with a rhythmic pattern of eighth notes, each with an accent (>). The second and third staves continue this pattern. The fourth and fifth staves feature a mix of eighth notes and quarter notes, all with accents. The sixth staff concludes the piece with a final note and a double bar line.

Jamaican Jam

Musical score for 'Jamaican Jam' in 4/4 time. The score consists of one staff. It begins with a measure of rest followed by a measure containing the number '2'. The music features a rhythmic pattern of eighth notes with accents (>). The final measure contains a triplet of eighth notes (marked '3') and is labeled '(shots)' above it. The piece ends with a double bar line.

A musical staff in treble clef with a key signature of one flat. The staff contains a series of rhythmic accents, represented by greater-than signs (>) placed above the notes. The notes are mostly eighth notes, with some sixteenth notes and a quarter note towards the end.

(shots)

A musical staff in treble clef with a key signature of one flat. It begins with a triplet of eighth notes, marked with a '3' above the notes. The rest of the staff contains a sequence of eighth notes.

A musical staff in treble clef with a key signature of one flat. It features a triplet of eighth notes, marked with a '3' above the notes, followed by a sequence of eighth notes.

Butt Dance

2

A musical staff in treble clef with a key signature of one flat. It starts with a double bar line, followed by a sequence of eighth notes with accents (^) above them.

A musical staff in treble clef with a key signature of one flat. It continues the sequence of eighth notes with accents (^) above them.

A musical staff in treble clef with a key signature of one flat. It features a sequence of eighth notes, some with beams connecting them.

Ten Four

2

A musical staff in treble clef with a key signature of one flat. It starts with a double bar line, followed by a sequence of chords, primarily consisting of eighth notes.

A musical staff in treble clef with a key signature of one flat. It features a sequence of eighth notes, with several groups of three notes marked as triplets with a '3' above them.

Half Time

rit.

A musical staff in treble clef with a key signature of one flat. It features a sequence of eighth notes with accents (^) above them. The word 'rit.' (ritardando) is written above the staff towards the end.

A musical staff in treble clef with a key signature of one flat. It features a sequence of eighth notes, some with beams connecting them.

NWR Drumline Grooves

Basses

Pearl

Northwest Rankin Band 2011

NWR Drumline

Musical notation for Pearl grooves, consisting of 10 staves. The notation includes various rhythmic patterns, rests, and dynamic markings such as *f* and accents (>>). The first staff shows time signature changes from 4/4 to 3/8 and back to 4/4. The grooves feature a mix of eighth and sixteenth notes, often with accents.

Donk

Musical notation for Donk grooves, consisting of 3 staves. The notation includes rhythmic patterns with accents (>) and a sixteenth-note triplet (6). The grooves are characterized by a consistent rhythmic pattern with accents on specific notes.

Bob Saget

NWR Drumline Grooves

Musical notation for the 'Bob Saget' groove, consisting of five staves. The notation includes various rhythmic patterns, rests, and dynamic markings such as accents (>) and sixteenth-note runs (6). The first staff features a repeating eighth-note pattern with rests. The second staff includes a sixteenth-note run marked with a '6' and an accent. The third staff shows a complex rhythmic pattern with eighth and sixteenth notes. The fourth staff continues the eighth-note pattern. The fifth staff concludes with a sixteenth-note run marked with a '6' and an accent, followed by a final note and a rest.

Gut Rocket

Musical notation for the 'Gut Rocket' groove, consisting of five staves. The notation features eighth-note patterns, rests, and accents (>) on various notes. The first staff begins with a quarter rest followed by eighth notes. The second staff continues with eighth-note patterns. The third staff shows a similar eighth-note pattern. The fourth staff includes accents on several notes. The fifth staff concludes with a final eighth-note pattern and a rest.

War Hammer

NWR Drumline Grooves

Musical notation for the 'War Hammer' drum groove. It consists of seven staves of music. The first staff is in 12/8 time and begins with a 3-measure rest. The notation features a variety of rhythmic patterns, including eighth and sixteenth notes, with many notes marked with an accent (>). The piece concludes with a double bar line.

Chupacabra

Musical notation for the 'Chupacabra' drum groove. It consists of four staves of music in 4/4 time. The notation is characterized by a consistent eighth-note pattern with accents (>) on every note. The piece includes a triplet of eighth notes and a sextuplet of eighth notes, both marked with an accent (>). The piece concludes with a double bar line.

NWR Drumline Grooves

Spyder

The 'Spyder' drumline groove is presented across seven staves of musical notation. The notation includes various rhythmic patterns, rests, and accents. The first staff features a sequence of eighth notes, followed by two sixteenth-note runs, each marked with a '6' above the notes. The subsequent staves contain a variety of rhythmic patterns, including eighth notes, sixteenth notes, and rests, with some notes marked with an 'x' to indicate specific drum sounds. The notation concludes with a final note marked with an accent (>) and a double bar line.

Jamaican Jam

The 'Jamaican Jam' drumline groove is presented across two staves of musical notation. The first staff begins with a rest marked with a '2' above it, followed by a series of eighth notes. The second staff starts with a note marked with an 'x' and a '3' above it, followed by a series of eighth notes. The notation concludes with a double bar line.

NWR Drumline Grooves

Musical staff with a triplet of eighth notes marked with a '3' above it.

Musical staff with a triplet of eighth notes marked with a '3' above it.

Butt Dance

Musical staff with a double bar line and a '2' below it, followed by a rhythmic pattern.

Musical staff with a rhythmic pattern of eighth notes.

Musical staff with a complex rhythmic pattern of eighth notes.

Ten Four

Musical staff with a double bar line and a '2' below it, followed by a rhythmic pattern.

Musical staff with a rhythmic pattern and the text "Half Time" to the right.

Musical staff with a rhythmic pattern and the text "rit." above it.

Cymbals

NWR Drumline Grooves

Northwest Rankin Band 2011

NWR Drumline

Pearl

Musical notation for the Pearl groove, measures 1-4. The first measure is in 4/4 time with a whole rest. The second measure is in 3/8 time with a whole rest. The third measure is in 3/4 time with a whole rest. The fourth measure is in 4/4 time with a quarter note G4, quarter note A4, quarter note B4, quarter note C5.

f

Musical notation for the Pearl groove, measures 5-8. Each measure contains a quarter note G4, quarter note A4, quarter note B4, quarter note C5.

Musical notation for the Pearl groove, measures 9-12. Measures 9-11 contain quarter notes G4, A4, B4, C5 with an 'x' above each note. Measure 12 contains quarter notes G4, A4, B4, C5.

Musical notation for the Pearl groove, measures 13-16. Each measure contains eighth notes G4, A4, B4, C5, G4, A4, B4, C5.

Musical notation for the Pearl groove, measures 17-20. Measures 17-19 contain eighth notes G4, A4, B4, C5, G4, A4, B4, C5. Measure 20 contains a quarter note G4, quarter note A4, quarter note B4, quarter note C5.

Musical notation for the Pearl groove, measures 21-24. Measures 21-23 contain quarter notes G4, A4, B4, C5 with an 'x' above each note. Measure 24 contains quarter notes G4, A4, B4, C5.

Donk

Musical notation for the Donk groove, measures 1-4. Measure 1 has a whole rest. Measures 2-4 contain quarter notes G4, A4, B4, C5.

Musical notation for the Donk groove, measures 5-8. Each measure contains quarter notes G4, A4, B4, C5 with an 'x' above each note.

Musical notation for the Donk groove, measures 9-12. Measures 9-11 contain quarter notes G4, A4, B4, C5. Measure 12 contains quarter notes G4, A4, B4, C5.

Bob Saget

NWR Drumline Grooves

The first two staves of the Bob Saget groove. The first staff is a snare drum line with a rhythmic pattern of quarter notes and eighth notes, including some rests. The second staff is a bass drum line with a consistent eighth-note pattern.

The third staff of the Bob Saget groove, continuing the snare drum line with a similar rhythmic pattern to the first staff.

Gut Rocket

The first staff of the Gut Rocket groove, a snare drum line consisting of a steady eighth-note pattern.

The second staff of the Gut Rocket groove, continuing the snare drum line with eighth notes and a final half-note flourish.

The third staff of the Gut Rocket groove, a bass drum line with a steady eighth-note pattern.

War Hammer

The first staff of the War Hammer groove, starting with a 12/8 time signature and a 4-measure rest, followed by a snare drum line with eighth notes.

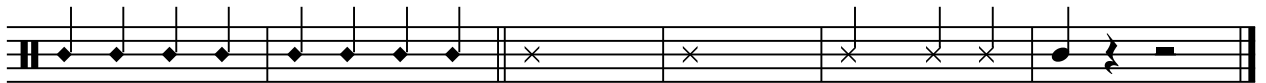
The second staff of the War Hammer groove, continuing the snare drum line with eighth notes.

The third staff of the War Hammer groove, starting with a 2-measure rest followed by a bass drum line with eighth notes.

NWR Drumline Grooves

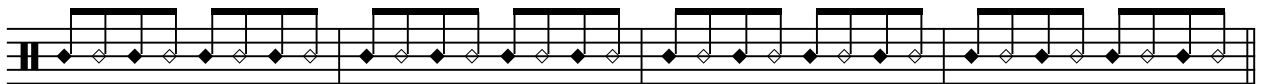


Chupacabra



Spyder

2



NWR Drumline Grooves

Jamaican Jam

2

The musical notation for 'Jamaican Jam' consists of three staves. The first staff begins with a double bar line, a key signature of one sharp (F#), and a time signature of 2. It contains a solid black bar for the first measure, followed by a series of quarter notes on a single pitch. The second and third staves show a more complex rhythmic pattern with eighth notes and rests, including some notes with diamond-shaped stems.

Butt Dance

2

The musical notation for 'Butt Dance' consists of two staves. The first staff starts with a double bar line, a key signature of one sharp (F#), and a time signature of 2. It features a solid black bar for the first measure, followed by a sequence of quarter notes. The second staff continues with a similar rhythmic pattern, including some notes with diamond-shaped stems and rests.

Ten Four

2

The musical notation for 'Ten Four' consists of two staves. The first staff begins with a double bar line, a key signature of one sharp (F#), and a time signature of 2. It contains a solid black bar for the first measure, followed by a series of quarter notes. The second staff continues with a similar rhythmic pattern of quarter notes.

Half Time

rit.

The musical notation for 'Half Time' consists of one staff. It begins with a double bar line, a key signature of one sharp (F#), and a time signature of 2. The notation features a series of quarter notes with diamond-shaped stems, followed by a final note with a fermata.